

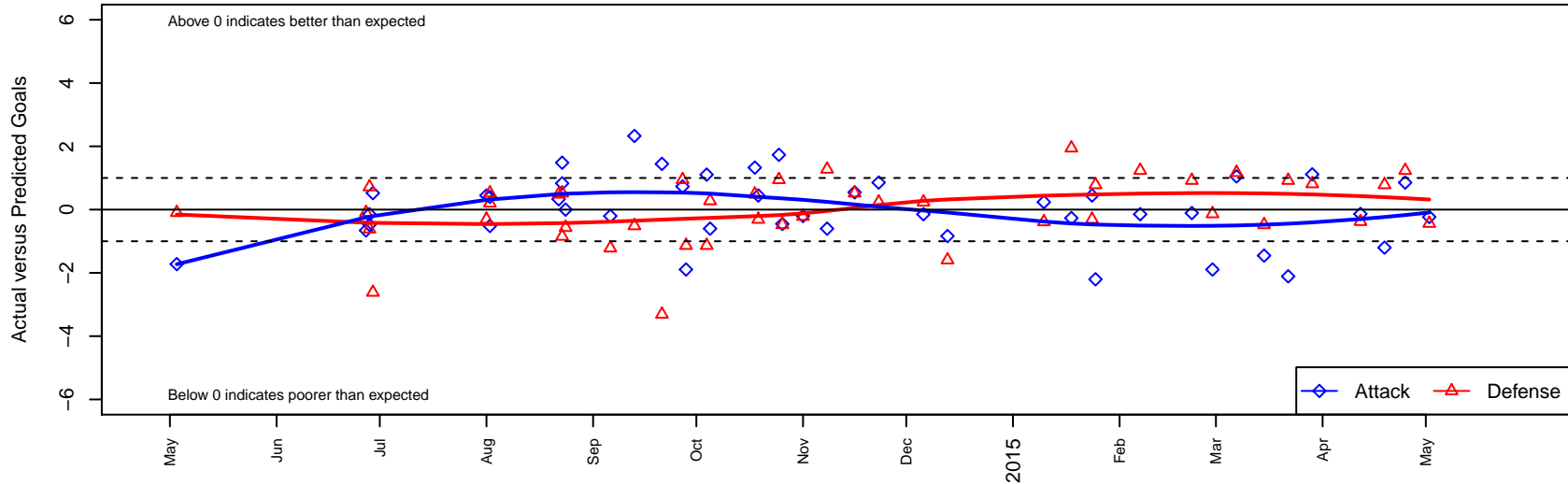
Whatcom Rangers Blue B00

Whatcom FC Rangers
 Bellingham, WA
 B00 total strength=1156
 attack=3.14 defense=3.75
 fall league = RCL B00 Div 4, RCL B00 7v2
 spr league = Win RCL B00 Div 4
 notes= Colvin

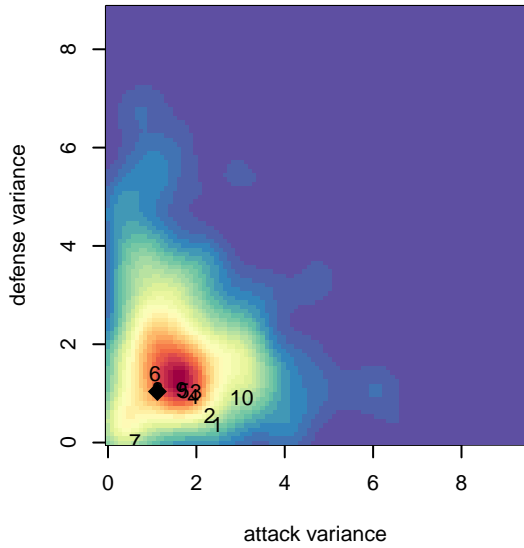
alt names used:
 50 WFC Rangers B00 Blue
 51 WFC Rangers B00 Blue Colvin
 Whatcom FC Ra – BU00 Blue
 Whatcom FC Ra – BU00 Blue
 WHATCOM FC RANGERS WFC RANGERS B
 Whatcom FC Ra – BU00 Blue
 Whatcom FC Ra – BU00 Blue

Venues played:
 2013 Challenge Cup B00 Division 2 – Challeng
 2014 Baker Blast COPA U14
 2014 WA Rush Cup BU14 Silver U14
 2014 Puma Pacific Coast Challenge U14
 2014 RCL B00 Div 4
 2014 RCL B00 7v2
 2014 Win RCL B00 Div 4
 2014 WYS Presidents Cup B00 Division 2

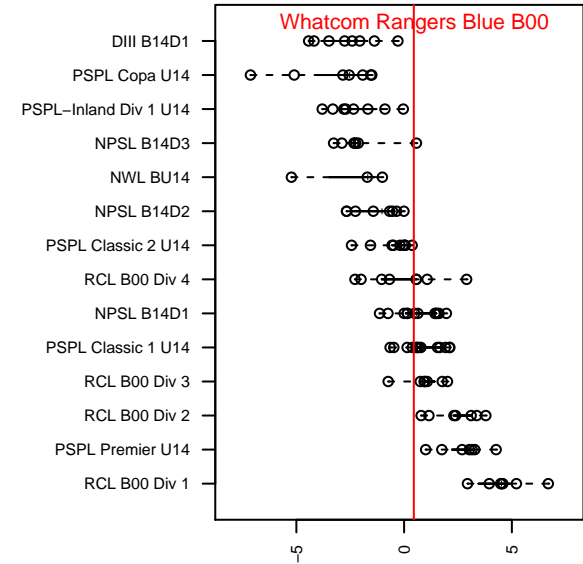
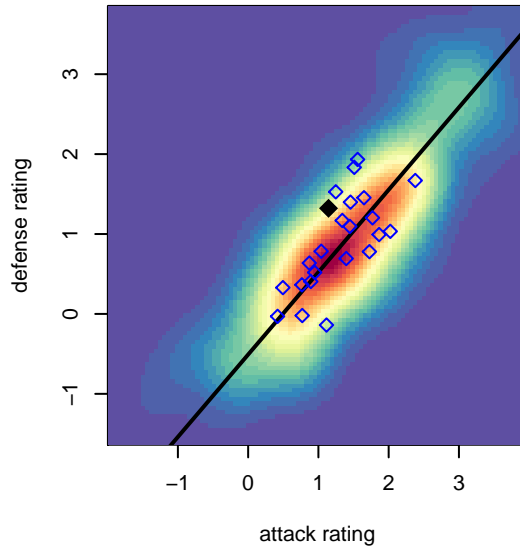
Whatcom Rangers Blue B00
 Dots are actual minus expected GF (blue circles) and GA (red triangles).
 Blue line is smoothed change in attack strength. Red is smoothed change in defense strength.



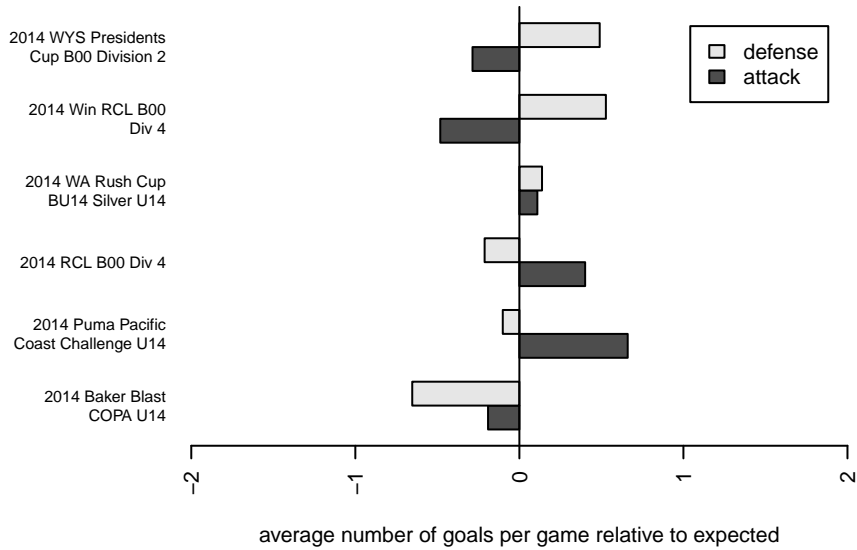
**attack and defense variance (black dot)
relative to other teams
and top 10 in region**



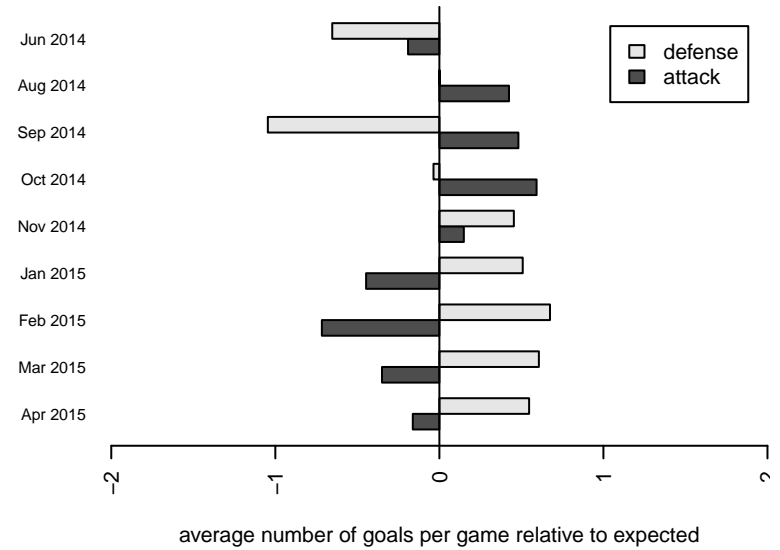
**attack and defense rating
relative to others at age
and all opponents in last 13 months**



Performance relative to 13 month average



Performance relative to 13 month average



| date | home | | away | | venue | pred.home | pred.away |
|------------|------------------------------|---|------------------------------|---|--|-----------|-----------|
| 2015-05-02 | BIFC Blue B00 | 2 | Whatcom Rangers Blue B00 | 1 | 2014 WYS Presidents Cup B00 Division 2 | 1.56 | 1.23 |
| 2015-04-25 | Whatcom Rangers Blue B00 | 2 | Kitsap Alliance FC Red B00 | 0 | 2014 WYS Presidents Cup B00 Division 2 | 1.15 | 1.24 |
| 2015-04-19 | Eastside FC Grey B00 | 0 | Whatcom Rangers Blue B00 | 1 | 2014 WYS Presidents Cup B00 Division 2 | 0.78 | 2.20 |
| 2015-04-12 | Whatcom Rangers Blue B00 | 1 | FC Alliance B B00 | 2 | 2014 WYS Presidents Cup B00 Division 2 | 1.14 | 1.62 |
| 2015-03-29 | SGESC Fusion Red B00 | 0 | Whatcom Rangers Blue B00 | 4 | 2014 WYS Presidents Cup B00 Division 2 | 0.81 | 2.89 |
| 2015-03-22 | Whatcom Rangers Blue B00 | 0 | Harbor Premier Green B00 | 0 | 2014 WYS Presidents Cup B00 Division 2 | 2.11 | 0.92 |
| 2015-03-15 | PacNW White B00 | 1 | Whatcom Rangers Blue B00 | 2 | 2014 Win RCL B00 Div 4 | 0.52 | 3.45 |
| 2015-03-07 | Whatcom Rangers Blue B00 | 2 | Slammers Orange B00 | 0 | 2014 Win RCL B00 Div 4 | 0.95 | 1.17 |
| 2015-02-28 | Crossfire Yakima B00 | 1 | Whatcom Rangers Blue B00 | 0 | 2014 Win RCL B00 Div 4 | 0.87 | 1.89 |
| 2015-02-22 | Whatcom Rangers Blue B00 | 2 | Harbor Premier Green B00 | 0 | 2014 Win RCL B00 Div 4 | 2.11 | 0.92 |
| 2015-02-07 | Whatcom Rangers Blue B00 | 1 | Kitsap Alliance FC Red B00 | 0 | 2014 Win RCL B00 Div 4 | 1.15 | 1.24 |
| 2015-01-25 | Eastside FC Grey B00 | 0 | Whatcom Rangers Blue B00 | 0 | 2014 Win RCL B00 Div 4 | 0.78 | 2.20 |
| 2015-01-24 | WPFC Navy B00 | 2 | Whatcom Rangers Blue B00 | 2 | 2014 Win RCL B00 Div 4 | 1.69 | 1.55 |
| 2015-01-18 | Whatcom Rangers Blue B00 | 1 | Washington Timbers Green B00 | 0 | 2014 Win RCL B00 Div 4 | 1.27 | 1.94 |
| 2015-01-10 | Kent United Green B00 | 2 | Whatcom Rangers Blue B00 | 1 | 2014 Win RCL B00 Div 4 | 1.61 | 0.76 |
| 2014-12-13 | FWFC Blue B00 | 3 | Whatcom Rangers Blue B00 | 0 | 2014 RCL B00 7v2 | 1.41 | 0.84 |
| 2014-12-06 | Kitsap Alliance FC Red B00 | 1 | Whatcom Rangers Blue B00 | 1 | 2014 RCL B00 Div 4 | 1.24 | 1.15 |
| 2014-11-23 | Whatcom Rangers Blue B00 | 2 | Kitsap Alliance FC Red B00 | 1 | 2014 RCL B00 Div 4 | 1.15 | 1.24 |
| 2014-11-16 | Whatcom Rangers Blue B00 | 4 | PacNW White B00 | 0 | 2014 RCL B00 Div 4 | 3.45 | 0.52 |
| 2014-11-08 | Whatcom Rangers Blue B00 | 0 | Yakima Borges B00 | 2 | 2014 RCL B00 Div 4 | 0.60 | 3.28 |
| 2014-11-01 | Whatcom Rangers Blue B00 | 2 | Eastside FC Grey B00 | 1 | 2014 RCL B00 Div 4 | 2.20 | 0.78 |
| 2014-10-26 | PacNW White B00 | 1 | Whatcom Rangers Blue B00 | 3 | 2014 RCL B00 Div 4 | 0.52 | 3.45 |
| 2014-10-25 | Washington Timbers Green B00 | 1 | Whatcom Rangers Blue B00 | 3 | 2014 RCL B00 Div 4 | 1.94 | 1.27 |
| 2014-10-19 | WPFC Navy B00 | 2 | Whatcom Rangers Blue B00 | 2 | 2014 RCL B00 Div 4 | 1.69 | 1.55 |
| 2014-10-18 | Snohomish United Red B00 | 0 | Whatcom Rangers Blue B00 | 4 | 2014 RCL B00 Div 4 | 0.49 | 2.67 |
| 2014-10-05 | Yakima Borges B00 | 3 | Whatcom Rangers Blue B00 | 0 | 2014 RCL B00 Div 4 | 3.28 | 0.60 |
| 2014-10-04 | Crossfire Yakima B00 | 2 | Whatcom Rangers Blue B00 | 3 | 2014 RCL B00 Div 4 | 0.87 | 1.89 |
| 2014-09-28 | Whatcom Rangers Blue B00 | 0 | Crossfire Yakima B00 | 2 | 2014 RCL B00 Div 4 | 1.89 | 0.87 |

| date | home | | away | | venue | pred.home | pred.away |
|-------------|-----------------------------|---|-----------------------------------|---|--|------------------|------------------|
| 2014-09-27 | Whatcom Rangers Blue B00 | 2 | Washington Timbers Green B00 | 1 | 2014 RCL B00 Div 4 | 1.27 | 1.94 |
| 2014-09-21 | Whatcom Rangers Blue B00 | 3 | WPFC Navy B00 | 5 | 2014 RCL B00 Div 4 | 1.55 | 1.69 |
| 2014-09-13 | Whatcom Rangers Blue B00 | 5 | Snohomish United Red B00 | 1 | 2014 RCL B00 Div 4 | 2.67 | 0.49 |
| 2014-09-06 | Eastside FC Grey B00 | 2 | Whatcom Rangers Blue B00 | 2 | 2014 RCL B00 Div 4 | 0.78 | 2.20 |
| 2014-08-24 | CCB Elite 2001B | 6 | Whatcom Rangers Blue B00 | 0 | 2014 Puma Pacific Coast Challenge U14 | 5.43 | 0.00 |
| 2014-08-23 | Port Moody AC Selects 2001B | 3 | Whatcom Rangers Blue B00 | 2 | 2014 Puma Pacific Coast Challenge U14 | 2.15 | 1.17 |
| 2014-08-23 | Whatcom Rangers Blue B00 | 2 | PacNW Blue B00 | 1 | 2014 Puma Pacific Coast Challenge U14 | 0.52 | 1.52 |
| 2014-08-22 | Whatcom Rangers Blue B00 | 3 | Snohomish United Red B00 | 0 | 2014 Puma Pacific Coast Challenge U14 | 2.67 | 0.49 |
| 2014-08-02 | PacNW Blue B00 | 1 | Whatcom Rangers Blue B00 | 0 | 2014 WA Rush Cup BU14 Silver U14 | 1.52 | 0.52 |
| 2014-08-02 | Whatcom Rangers Blue B00 | 2 | ISC Gunners C B00 | 1 | 2014 WA Rush Cup BU14 Silver U14 | 1.60 | 1.20 |
| 2014-08-01 | WPFC Navy B00 | 2 | Whatcom Rangers Blue B00 | 2 | 2014 WA Rush Cup BU14 Silver U14 | 1.69 | 1.55 |
| 2014-06-29 | Kelowna United 2001B | 4 | Whatcom Rangers Blue B00 | 1 | 2014 Baker Blast COPA U14 | 1.38 | 0.48 |
| 2014-06-28 | Whatcom Rangers Blue B00 | 2 | Seattle United Shoreline Blue B00 | 0 | 2014 Baker Blast COPA U14 | 2.15 | 0.71 |
| 2014-06-28 | Kelowna United 2001B | 2 | Whatcom Rangers Blue B00 | 0 | 2014 Baker Blast COPA U14 | 1.38 | 0.48 |
| 2014-06-27 | Guildford Dynamo 2001B | 1 | Whatcom Rangers Blue B00 | 3 | 2014 Baker Blast COPA U14 | 0.90 | 3.66 |
| 2014-05-03 | Highline Premier Blue B00 | 1 | Whatcom Rangers Blue B00 | 0 | 2013 Challenge Cup B00 Division 2 – Chal | 0.90 | 1.72 |
| 2014-04-26 | WPFC Navy B00 | 0 | Whatcom Rangers Blue B00 | 2 | 2013 Challenge Cup B00 Division 2 – Chal | NA | NA |